



CO-FOUNDER NEEDED

Through AI-driven solutions, we quantify human brain images and deliver high-quality data for pharma and research.

CEREBRAL METRICS

THE PROBLEM

Pharma companies developing medicines for brain diseases such as dementia face a critical challenge: obtaining high-quality and precise data from human brain MRI and PET scans.

OUR SOLUTION

We provide high-quality, quantitative data derived from human brain MRI and PET images using our AI-driven platform, OPETIA. By automating image analysis and data extraction, we deliver reliable and standardized datasets that pharma companies and researchers can use to accelerate drug development, track disease progression, and make informed decisions.

PATENT STATUS

Not applicable

FINANCIAL OVERVIEW

We generate revenue by selling high-quality, quantitative brain imaging datasets to pharma and research institutions. Pricing is based on subscription tiers or project-specific analyses. Major costs include platform development, data processing, and regulatory compliance. Key milestones include onboarding initial clients, scaling dataset production, and expanding to international pharma partners.

MILESTONES ACHIEVED

We developed OPETIA, an AI-driven platform for automated analysis and quantification of human brain MRI and PET images. OPETIA has been scientifically validated and published in NeuroImage, a leading high-impact journal in neuroimaging, demonstrating its accuracy and reliability. The platform is fully operational and ready to generate high-quality datasets for use by pharma companies and research institutions.

TARGET MARKET & CUSTOMERS

Pharma companies in the field of brain diseases like dementia, research and development companies, and research centers such as hospitals and universities.

CO-FOUNDER PROFILE WE ARE LOOKING FOR

Must-have qualifications/background

- Business development within the MedTech industry.

Nice-to-have qualifications/background

- Familiar with dementia and human brain research.
- Familiar with IT and software development.

Personal fit

- We seek a collaborative and reliable co-founder with a passion for healthcare innovation. Transparency, open communication, and a hands-on approach are essential. Flexibility for remote work across European time zones and a shared drive to advance neuroscience and patient outcomes are highly valued.

TASKS & RESPONSIBILITIES (FIRST 3 MONTHS)

Our main challenges lie in navigating regulatory requirements, establishing industry partnerships, and developing a strong commercialization strategy. While our technical foundation and product development are in place with OPETIA, we need support in ensuring compliance (CE, FDA, MDR), building trust with pharma partners, and scaling our business model. We hope the co-founder can bring MedTech industry experience, regulatory expertise, and business development skills to help us successfully bring our solution to market.

ACADEMIC & ENTREPRENEURIAL BACKGROUND OF CURRENT CO-FOUNDERS

The main co-founders have a background in biomedical engineering, medical data analysis, data engineering, and machine learning.

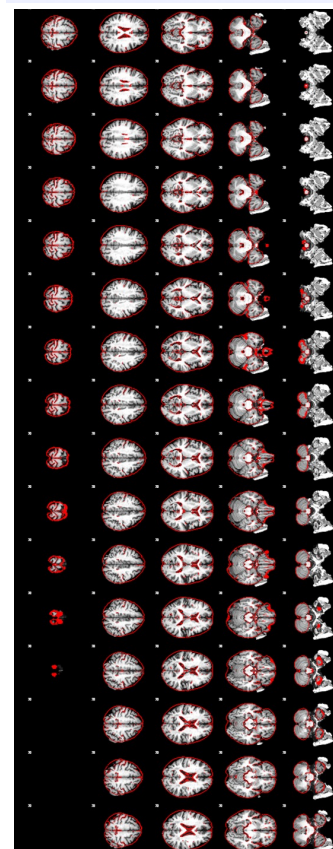
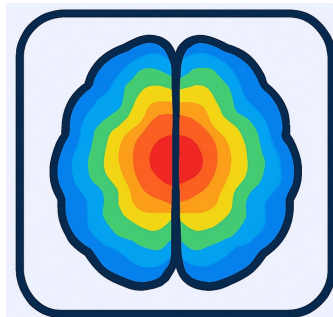
PHYSICAL ADDRESS

University of Southern Denmark.

PUBLICATION

Odense-Oxford PET Image Analysis (OPETIA): An FSL-based toolbox for multimodal neuroimaging

Authors: Taha Parsayan, Sasan Andalib, Thomas Lund Andersen, Habib Ganjgahi, Poul Flemming Højlund-Carlson, Abass Alavi, Mojtaba Zarei



ABOUT OPEN ENTREPRENEURSHIP

Open Entrepreneurship is a collaboration between all Danish universities aiming to create more research-based startups.

www.open-entrepreneurship.com



SUPPORTED BY
Uddannelses- og
Forskningsministeriet