



CO-FOUNDER NEEDED

Measuring tumor metabolism in real time

Fluxion

THE PROBLEM

3D tumor models are used to evaluate cancer therapies — yet metabolic response is captured only at endpoints. Early adaptive shifts remain invisible, limiting our ability to detect resistance.

OUR SOLUTION

Fluxion makes tumor metabolism measurable in real time.

PATENT STATUS

International PCT patent application filed (August 2025).

FINANCIAL OVERVIEW

Fluxion is being developed as a hardware-plus-consumables platform. Revenue will combine instrument sales, recurring chips, and data analytics subscriptions.

MILESTONES

Milestones: Functional research prototype completed; LOI from Stanford University; PCT patent filed; 500 kSEK investment offer secured; presented at Nordic Innovation Fair and KTH DeepTech Summit.

Next 12 months: Industrial beta prototype; first pilot customers; company formation and seed round.

TARGET MARKET & CUSTOMERS

Target market: Academic cancer research labs, translational oncology groups, and organoid-focused biotech companies.

Expansion: Pharmaceutical R&D, precision oncology platforms, and CROs offering advanced tumor testing.

CO-FOUNDER PROFILE WE ARE LOOKING FOR

Preferred qualifications

We seek a commercially driven co-founder with biotech or MedTech experience, strong fundraising capability, and proven customer discovery skills. Ownership mindset, execution focus, and comfort with early-stage uncertainty are essential.

Personal fit

You have experience raising early-stage capital and engaging investors. You are comfortable taking commercial ownership in a pre-spinout setting and driving fundraising and market validation.

TASKS & RESPONSIBILITIES (FIRST 3 MONTHS)

Lead pre-seed fundraising and investor outreach, validate customer demand, refine positioning and go-to-market strategy, and structure financing for prototype completion and IP runway extension.

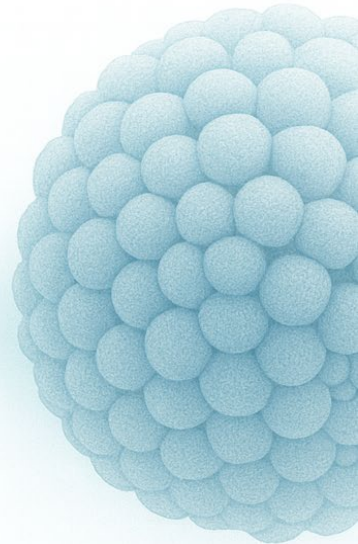
Primary objective: secure funding to build the functional prototype and sustain patent protection.

ACADEMIC & ENTREPRENEURIAL BACKGROUND OF CURRENT CO-FOUNDERS

Team: Three academic co-founders combining microfluidic engineering, metabolic systems biology, and translational cancer research at DTU. Functional prototype developed with early investor interest secured. Pre-spinout stage.

PHYSICAL ADDRESS

DTU Bioengineering
Technical University of Denmark
2800 Kgs. Lyngby, Denmark



FLUXION

ABOUT OPEN ENTREPRENEURSHIP

Open Entrepreneurship is a collaboration between all Danish universities aiming to create more research-based startups.

www.open-entrepreneurship.com



SUPPORTED BY

Uddannelses- og
Forskningsministeriet